



newsletter

MAY 2025



- Page 2
 - Specially-abled (Special Needs/Disabled) Pets
- Page 3a, 3b, 3c
 - Ticks and Their Diseases
- Page 4
 - Pets and Toxins: What You Need to Know
- Page 5
 - HOI Dog Show
- Page 6a-6b
 - Shelter Pets



Reminders:

- May 11-14 Westminster Kennel Club Annual Dog Show
- Dr. Olsen will be out of the office on June 12th, we will still be open for tech appointments.



DOG BREED OF THE MONTH: BORDER TERRIER

Despite Border Terriers being beloved family pets, they were originally bred and used for hunting vermin. Border Terriers are known for their alert gaze, powerful drive to hunt and dig, good-natured personality, loyalty, fearlessness, high energy levels, and determination. Naturally bred to run peacefully with foxhounds, they are also affectionate dogs that will want to spend time with their owners.



Celebrate with us!

- National Pet Month
- National Foster Care Month
- Responsible Animal Guardian Month
- Pet Cancer Awareness Month
- Chip Your Pet Month
- May 5-11 | Dog Anxiety Awareness Week
- May 5-11 | Puppy Mill Action Week
- May 5-11 | National Pet Week
- May 1 | National Purebred Dog Day
- May 1 | International Samoyed Day
- May 3 | National Specially-Abled Pets Day
- May 11 | National Dog Mom's Day
- May 20 | National Rescue Dog Day



Specialty-abled (Special Needs/Disabled) Pets Day



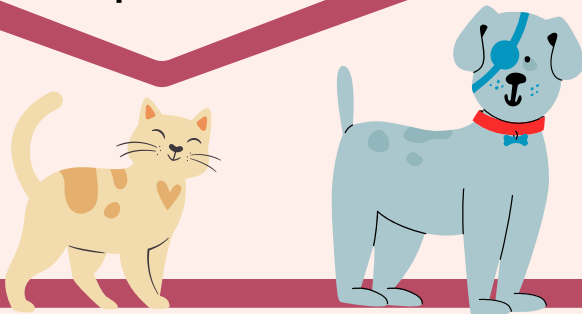
On May 3rd every year, National Specially-abled Pets Day sheds light on precious pets with disabilities, from blindness to limb loss. This holiday aims to educate the public about the need to adopt special pets from the shelters, and highlight why they are exceptional companions with unique needs.

Common Disabilities in Pets

- Blindness
- Deafness
- Missing limbs
- Mobility issues
- Chronic diseases, such as diabetes
- Cognitive dysfunction
- Anxiety

Unique Needs of Specialty-abled Pets

Specially-abled pets come with unique needs depending on their particular disability. In addition to being sure you can accommodate extra veterinary visits and the financial burden that comes with that, you also need to account for the extra time and attention they'll require depending on their particular health obstacle. Their specific disability is a significant factor in how much medical care they'll need and how much of your attention they'll require.



Special Abilities of Disabled Pets

- Visually-impaired pets often have heightened senses of smell, hearing and touch. This makes it easier to navigate their environments and play.
- Hearing-impaired pets respond incredibly well to American Sign Language (ASL) commands once trained appropriately.
- Pets with a missing limb can learn how to play, run, engage with humans and others pets just as well as their four-legged counterparts.



Special training might be necessary for owners of specialty-abled pets. This may include administering medications, safety protocols for blind or deaf pets, and accommodating mobility issues for amputees. The Handicapped Pets Foundation accepts applications for wheelchairs for pets with mobility issues. In addition, your home might need to be adapted to ensure your pet's safety, including removing potentially dangerous items in the path of a blind or three-legged animal. Disabled pets might also require special accommodations during the day if you work outside the home, as some need assistance eliminating or medications administered at specific times during the day.

Ticks & Icks!

TickEncounter

Blacklegged Tick or Deer Tick (*Ixodes scapularis*)



Engorged Deer Tick

Blacklegged tick
(*ixodes scapularis*)



Can transmit:

- Lyme disease
- Anaplasmosis

TickEncounter

Lone Star Tick (*Am...*)



Engorged Lone Star Tick

Lone star tick
(*Amblyomma americanum*)



Can transmit:

- Ehrlichiosis
- Rocky Mountain Spotted Fever
- Tularemia

TickEncounter

Brown Dog Tick (*Rhipicephalus sanguineus*)



Engorged Brown Dog Tick

Brown dog tick
(*Rhipicephalus sanguineus*)



Can transmit:

- Ehrlichiosis
- Rocky Mountain Spotted Fever
- Babesiosis

TickEncounter

American Dog Tick (*Dermacentor variabilis*)



Engorged American Dog Tick

American dog tick
(*Dermacentor variabilis*)



Can transmit:

- Ehrlichiosis
- Rocky Mountain Spotted Fever
- Tularemia

TickEncounter

Gulf Coast Tick (*Amblyomma maculatum*)



Engorged Gulf Coast Tick

Gulf Coast tick
(*Amblyomma maculatum*)



Can transmit:

- Ehrlichiosis
- Rocky Mountain Spotted Fever
- Tularemia

TickEncounter

Rocky Mountain Wood Tick (*Dermacentor andersoni*)



Engorged Rocky Mountain Wood Tick

Rocky Mountain Wood Tick
(*Dermacentor andersoni*)



Can transmit:

- Colorado Tick Fever
- Rocky Mountain Spotted Fever
- Tularemia

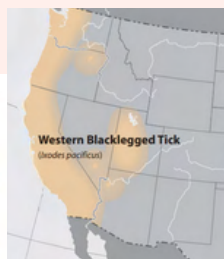
TickEncounter

Western-Blacklegged Tick (*Ixodes pacificus*)



Engorged Western-Blacklegged Tick

Western Blacklegged Tick
(*ixodes pacificus*)



Can transmit:

- Lyme Disease
- Anaplasmosis
- Babesiosis
- Hard Tick Relapsing Fever

TickEncounter

Asian Longhorned Tick (*Haemaphysalis longicornis*)



Engorged Asian Longhorned Tick

LARVA

ADULT MALE

ADULT FEMALE



Unfortunately, little is known of the population inhabiting the U.S. Scientists are still looking to determine preferred host, life cycle and diseases it can acquire and transmit.

<https://www.petsandparasites.org/parasite-prevalence-maps/#/2025/all-year/lyme-disease/dog/united-states>

Tickborne Diseases



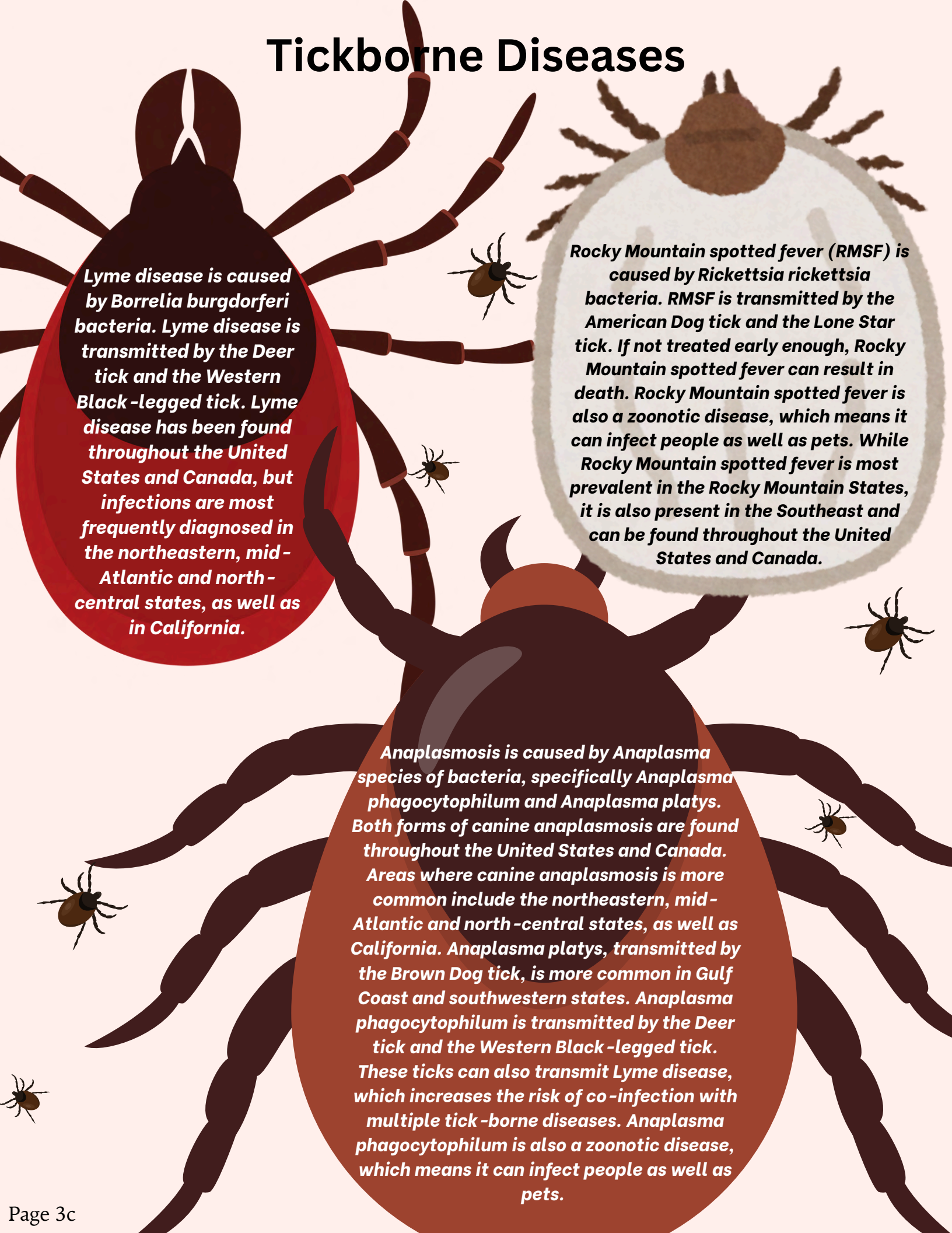
Babesiosis is caused by the *Babesia* species of bacteria: *Babesia gibsoni* and *Babesia vogeli*. *Babesia vogeli* organisms are transmitted by the Brown Dog tick, but other species like *Babesia gibsoni* can also be transmitted from dog to dog if an infected dog bites another. Babesiosis is found throughout the United States and Canada.

Ehrlichiosis is caused by *Ehrlichia* species of bacteria (*Ehrlichia canis*, *Ehrlichia ewingii*, *Ehrlichia chaffeensis*). *Ehrlichia canis* is transmitted by the Brown Dog tick. *Ehrlichia ewingii* and *Ehrlichia chaffeensis* are transmitted by the Lone Star tick. The highest concentration of *Ehrlichia canis* cases is in southwestern and Gulf Coast regions of the United States. The distribution and number of *Ehrlichia ewingii* and *Ehrlichia chaffeensis* cases are rising and can be found in states as far north as Massachusetts and as far west as central Oklahoma and Kansas.

Hepatozoonosis
Hepatozoon americanum is transmitted by the Gulf Coast tick. *Hepatozoon canis* is transmitted by the brown dog tick. Cases of canine hepatozoonosis have been reported in the eastern and middle-southern regions of the United States. Unlike other vector-borne diseases that are transmitted by tick bite, both forms of canine hepatozoonosis are transmitted when a dog ingests an infected tick.

For more information, please visit;
<https://www.petsandparasites.org/parasite-prevalence-maps/#/2025/all-year/lyme-disease/dog/united-state>

Tickborne Diseases



Lyme disease is caused by *Borrelia burgdorferi* bacteria. Lyme disease is transmitted by the Deer tick and the Western Black-legged tick. Lyme disease has been found throughout the United States and Canada, but infections are most frequently diagnosed in the northeastern, mid-Atlantic and north-central states, as well as in California.

Rocky Mountain spotted fever (RMSF) is caused by *Rickettsia rickettsia* bacteria. RMSF is transmitted by the American Dog tick and the Lone Star tick. If not treated early enough, Rocky Mountain spotted fever can result in death. Rocky Mountain spotted fever is also a zoonotic disease, which means it can infect people as well as pets. While Rocky Mountain spotted fever is most prevalent in the Rocky Mountain States, it is also present in the Southeast and can be found throughout the United States and Canada.

Anaplasmosis is caused by *Anaplasma* species of bacteria, specifically *Anaplasma phagocytophilum* and *Anaplasma platys*. Both forms of canine anaplasmosis are found throughout the United States and Canada. Areas where canine anaplasmosis is more common include the northeastern, mid-Atlantic and north-central states, as well as California. *Anaplasma platys*, transmitted by the Brown Dog tick, is more common in Gulf Coast and southwestern states. *Anaplasma phagocytophilum* is transmitted by the Deer tick and the Western Black-legged tick. These ticks can also transmit Lyme disease, which increases the risk of co-infection with multiple tick-borne diseases. *Anaplasma phagocytophilum* is also a zoonotic disease, which means it can infect people as well as pets.



PETS AND TOXINS: WHAT YOU NEED TO KNOW

BE PREPARED

- Keep medications stored away
- Store cleaning supplies and pest control out of pets reach
- Keep toxic foods out of reach
- Do not bring in flowers or other plants into home that may be toxic
- Have an emergency plan in place



DID YOU KNOW?

According to the ASPCA Poison Control Center, OTC medications and prescription medications are among the most commonly reported toxin. Ibuprofen, acetaminophen, heart and ADHD medications are some of the commonly reported toxins.

COMMON HOUSEHOLD TOXINS

- Chocolate, coffee, caffeine
- Garlic, onions, chives
- Salt, other seasonings
- Nuts, coconut and coconut oil
- Xylitol/Wood Sugar/Birch Sugar (artificial sweetener)
- Grapes, raisins
- Alcohol
- Medications



- Cleaners (detergent, soap, bleach, etc.)
- Cosmetic products
- Batteries
- Essential oils, Febreze, candles
- Mosquito/insect repellent
- Rodenticides
- Antifreeze
- Plant fertilizers



COMMON TOXIC PLANTS

- Lilies
- Marijuana
- Sago Palm
- Tulip Bulbs
- Azalea
- Oleander
- Amaryllis
- Pothos
- Philodendrons



SOME PET SAFE PLANTS

- Boston Fern
- Orchid
- Spider Plant
- Air Plant
- Butterfly Palm
- Friendship Plant
- Venus Fly Trap
- African Violet
- Calathea



**CORNBELT
KENNEL CLUB**

**SUPERINTENDENT:
ONOFRIO**

**ILLINOIS VALLEY
KENNEL CLUB**

HEART OF ILLINOIS DOG SHOWS



Memorial Day Weekend

MAY 23-26, 2025

FREE ADMISSION & PARKING



CBKC Website



IVKC

FASTCAT / EYE CLINIC / VENDORS

RAFFLE / SILENT AUCTION / 50/50

SHOW HOURS: 8AM - 6PM

**LOCATION: INTERSTATE CENTER
BLOOMINGTON, IL**

NO UNENTERED DOGS ALLOWED ON THE PREMISES



Petey

Hiya! Name's Petey! I'm a 2-year-old male tan and white pittie. I'm sweet and outgoing, I love to play and be outside, and I love making new friends. I'm a happy guy who gets along with other dogs, has an obsession with tennis balls, and has a wonderfully sweet personality. My adoption fee is \$350.

Humane Society of Central Illinois

SHELTER DOGS

Of the month



Queso

Another young, little, cutie alert!! Queso is about 3-years-old, and he weighs a little over 5-pounds. He can be nervous upon first greeting you, but oh my is he a love bug!! Queso does great with other dogs, cats, and adults. We aren't sure about really small children, as he would likely be fearful of them. He likes to snuggle, rides okay in the car, and doesn't mind a crate. He is working on understanding the leash for walks.

Deeby's Senior Chihuahua Rescue

Star

Former momma Star is now vetted and ready for a loving home to call her own. She was brought to animal control, along with her newborn babies, a few months ago. They were transferred to us and Star was a great mom, raising a beautiful litter of chunky baby girls. Her motherhood days are now behind her and it's her time to shine! We've not had her in the yard with other dogs but she pays no attention to them through the fence. She also doesn't bark at or seek out the feral barn kitties that are here. She uses the dog door well and keeps her kennel clean. She is guessed to be around 5 years old but that is purely a guess. She still loves to run and play if someone is in the yard to play with her.

Ruby's Rescue and Retreat, INC.

IF YOU ARE INTERESTED IN ADOPTING ANY PET FROM ANY RESCUE, ENSURE THAT ALL OF YOUR PETS ARE UP-TO-DATE ON VACCINES AND PREVENTATIVES. RESCUES CALL US TO CONFIRM THESE THINGS & WILL DENY YOU IF YOUR PETS ARE NOT CURRENT.



Spork

Meet Spork - the tuxedo-clad guy who's always up to something silly and will keep you laughing all day long. Spork is a total goofball-whether he's zooming around the house, dramatically flopping over for belly rubs, or helping you with absolutely everything, he knows how to bring the joy. But there's more to Spork than just his hilarious antics-he's a total softie at heart. Plus, Spork has a way with other cats, so they'll make a great addition to any multi-pet household.

Clover's Cat Club

SHELTER CATS

Of the month



Zoom Zoom

Hi, I'm Zoom Zoom! I'm a 3-year-old brown tabby shorthair. I'm a sweet girl and I love to cuddle and get loved on once I get to know you. My adoption fee is \$100.

Humane Society of Central Illinois



Gus

Meet Gus!

Gus is so sweet and gentle. He loves to just curl up on your lap! Come in to meet him & fill out an application. For more information give us a call at (217) 737 4042 or you can email us at shelter@hslclincoln.org ?

Humane Society of Logan County

IF YOU ARE INTERESTED IN ADOPTING ANY PET FROM ANY RESCUE, ENSURE THAT ALL OF YOUR PETS ARE UP-TO-DATE ON VACCINES AND PREVENTATIVES. RESCUES CALL US TO CONFIRM THESE THINGS & WILL DENY YOU IF YOUR PETS ARE NOT CURRENT.